

PRECISION
for medicine 

Start smart with IRB-approved, data rich samples

Biospecimens Product Catalog



Precision for Medicine Biospecimens

Precision for Medicine biospecimens are collected under IRB-approved protocols from consented and waiver of consent subjects, healthy or disease-state.

From donor selection, specimen collection, kitting & logistics, to delivery, our specimens remain under a single-chain of custody, allowing us to guarantee the quality of your samples at every step.



**MEDICAL
IRC/EIC**



1M+

Biofluids Specimens

Whole Blood, Plasma, Serum, CSF,
Stool, Saliva, Urine, Ascites Fluid,
Swabs, and more

3M+

Tissues

Pathologist-verified FFPE,
Fresh Frozen Tumor, Normal
Adjacent, Surgical Resection,
Biopsies, and more

60K+

Cell Vials

PBMCs, BMMCs, DTCs,
purified cell subsets, and
cryopreserved leukopaks

90+

Medical Conditions

for prospective collections

150+

Clinical Collection Sites

Across the globe



Blood, Biofluids and Derivatives

Human blood, plasma, serum, CSF, stool, saliva, urine, ascites fluid, swabs, and more

	Volume	Collection & Handling	Storage & Shipping Temp	Annotations
Whole Blood	10 mL per tube	EDTA	<ul style="list-style-type: none"> Remnant Clinical Samples Stored: -20°C Clinical Consented Samples Stored: -80°C Shipped: Dry Ice 	<ul style="list-style-type: none"> Demographic Info Diagnosis Treatment History
Plasma	1 mL – 5 mL aliquots Bulk >150 mL	EDTA/Streck		
ACD-A Plasma	1mL-15mL aliquots; matching PBMCs available	ACD-A		
Double-spun Plasma	1 mL aliquots	EDTA/Streck		
Serum	1 mL – 4 mL aliquots Bulk >150 mL	SST		
Buffy Coat	0.5 mL – 1 mL aliquots	EDTA/Streck		
Biofluids & Derivatives: CSF, stool, saliva, urine, ascites fluid, swabs, and others	Varied	Varied		

Tissues

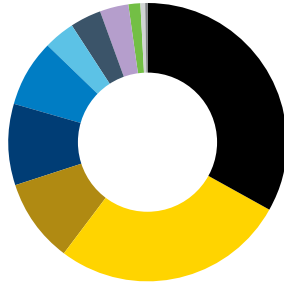
Pathologist-verified FFPE and fresh frozen tissue

	Format	Pathology	Annotations
Fresh Frozen Tissue	<ul style="list-style-type: none"> Frozen within 30 mins from time of collection (-80°C) 	<ul style="list-style-type: none"> Digital H&E slides available Board-certified pathologist confirmation (% tumor content, % necrosis, etc.) 	<ul style="list-style-type: none"> Demographic Info Diagnosis Treatment History
FFPE Tissue	<ul style="list-style-type: none"> Block Curls Slides Extracted DNA/RNA 		

Precision for Medicine Biospecimens

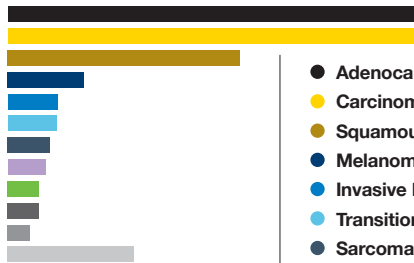
Matched Tissue and Blood Samples

Tumor + Blood derivatives from consented same subject with ready-to-ship inventory across 15+ cancer types



Material Type

- K2 EDTA Plasma (1090 | 33.22%)
- Streck Plasma (895 | 27.28%)
- K2 EDTA Buffy Coat (312 | 9.51%)
- Serum (310 | 9.45%)
- FFPE Tumor Tissue (259 | 7.89%)
- FFPE Benign Tissue (119 | 3.63%)
- Frozen Tumor Tissue (117 | 3.57%)
- Frozen Normal Tissue (111 | 3.38%)
- FFPE Normal Tissue (46 | 1.4%)
- PBMC (12 | 0.3%)
- Streck DNA Buffy Coat (10 | 0.3%)

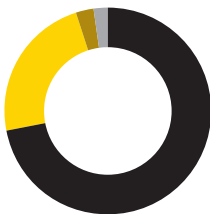


- Adenocarcinoma | 7973
- Carcinoma | 2847
- Squamous cell carcinoma | 1609
- Melanoma | 527
- Invasive Ductal Carcinoma | 345
- Transitional Cell Carcinoma | 338
- Sarcoma | 293
- High-Grade Serous Carcinoma | 261
- Glioblastoma Multiforme | 219
- NHL: Diffuse Large B-cell Lymphoma | 217
- Hodgkin Lymphoma | 154
- Other Cancers <150
 - Low-Grade Serous Carcinoma
 - Astrocytoma
 - Liposarcoma
 - Small Cell Carcinoma
 - NHL: Follicular Lymphoma
 - Pleomorphic Carcinoma
 - Invasive carcinoma
 - Ductal Carcinoma
 - NHL: Unspecified or Other Type
 - Neuroendocrine tumor
 - NHL: Marainal Zone Lymphoma

NGS Characterized Biospecimens

Tissue and biofluids sequenced by NGS

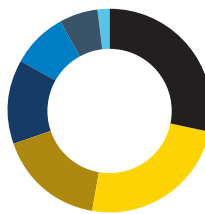
Tissue



Assay Type

- OPA (7,883 | 71.99%)
- TSO500 (2,531 | 23.11%)
- OPA & TSO500 (318 | 2.9%)
- Clinical SOC NGS (218 | 2%)

Biofluids

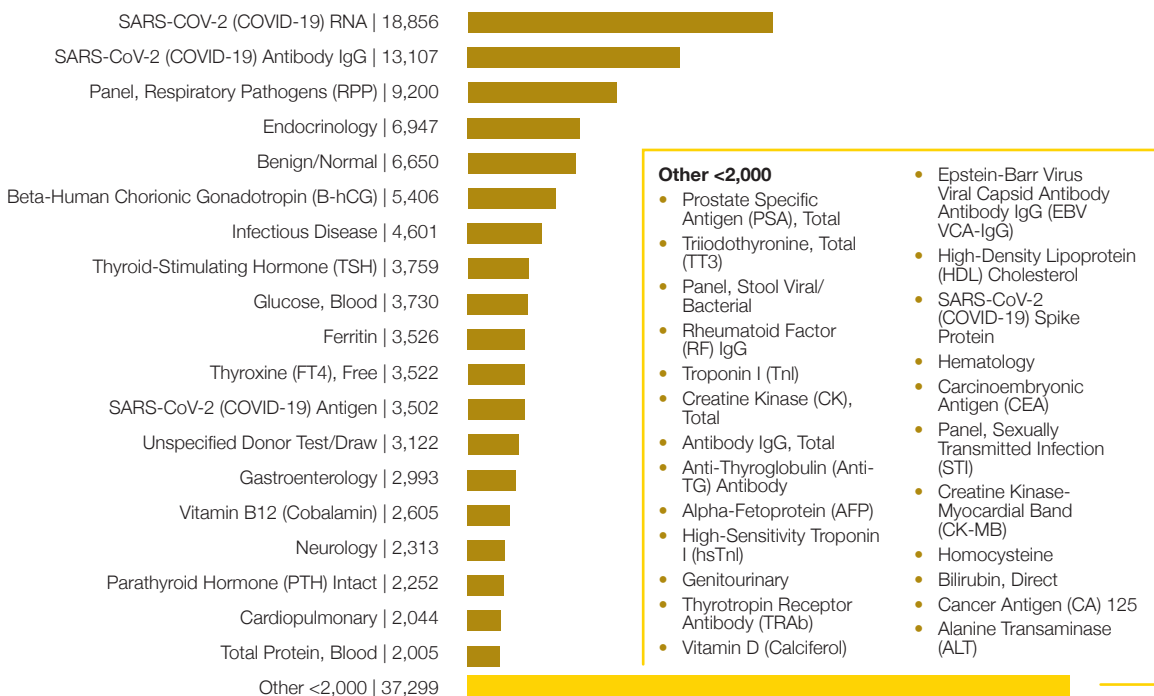
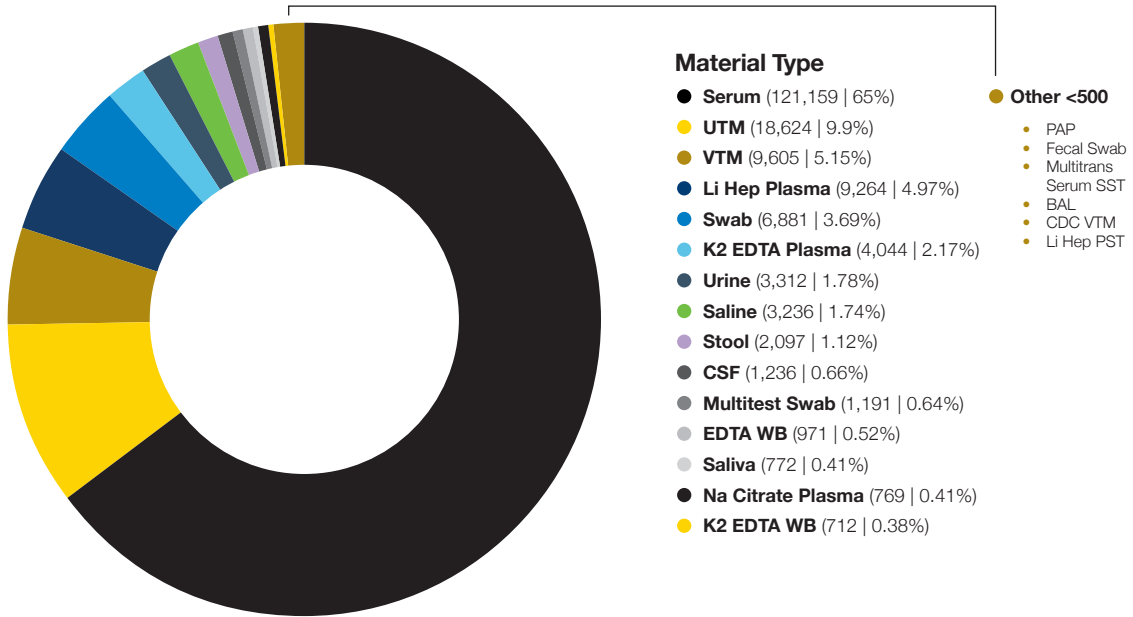


Material Type

- Streck Plasma (850 | 28.58%)
- Streck Buffy Coat (723 | 24.3%)
- PAXgene (504 | 16.94%)
- PAXgene RNA WB (402 | 13.51%)
- Steck DNA Buffy Coat (264 | 8.87%)
- K2 EDTA Plasma (182 | 6.12%)
- Buffy Coat (50 | 1.68%)

Remnant Diagnostic Specimens

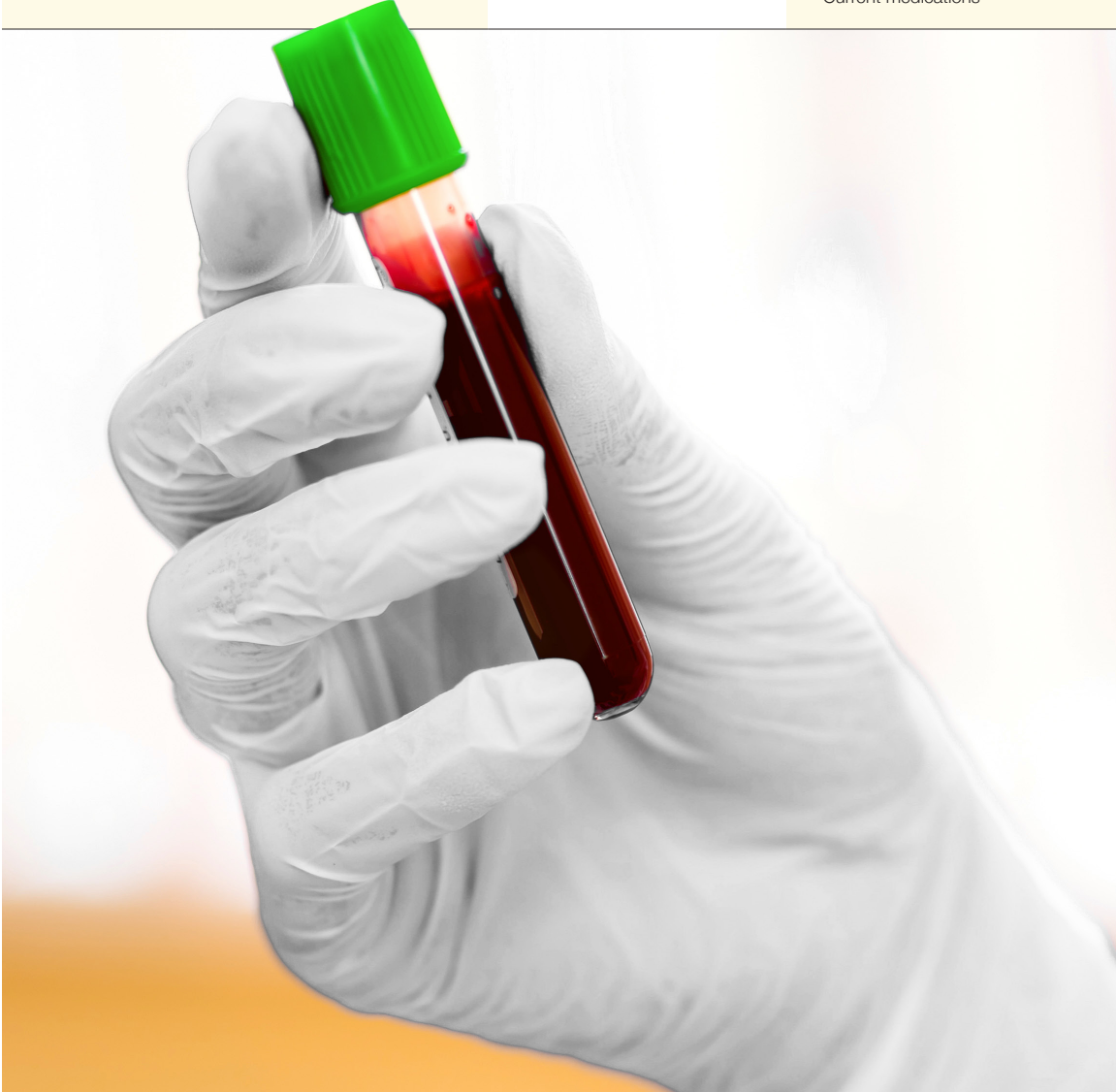
High-volume and bulk blood, biofluids, and derivatives characterized by method, result, diagnosis, or matrix



Consented Clinical Samples

Recently collected, data-rich specimens with exceptional quality and traceability

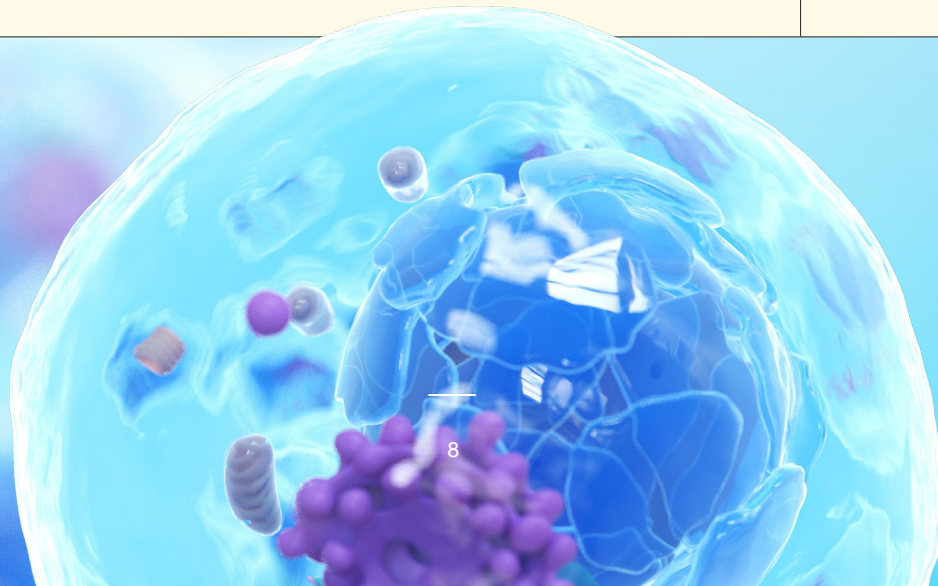
Format	Details	Annotations
Consented Clinical Samples <ul style="list-style-type: none">• Recently collected within 1-3 years and banked at -80°C• <5 years collected and stored long-term at -80°C	<ul style="list-style-type: none">• IRB-approved• Consented• 50+ oncology and disease categories	<ul style="list-style-type: none">• Demographic Info• Diagnosis• Treatment History• Concurrent medical conditions• Current medications



Viable Cells

All cell products are collected at Precision's IRB-approved investigative sites with standardized collection & processing

	Volume	Format	Annotations
Peripheral Blood Mononuclear Cells (PBMCs)	1M – 100M cells per vial	<ul style="list-style-type: none"> • Healthy or disease-state lots available • Fresh or frozen stored at LN or -150°C • >90% pre-freeze viability • HLA typed and viral negative 	
Bone Marrow Mononuclear Cells (BMMCs)	0.5M – 10M cells per vial	<ul style="list-style-type: none"> • Healthy or disease-state lots available • Isolated from bone marrow aspirate • Processed within 24 hrs and cryopreserved using CS-5 (serum-free media) • Matched sets of bone marrow supernatant, plasma and/or PBMCs 	<ul style="list-style-type: none"> • Demographic Info • Diagnosis
Dissociated Tumor Cells (DTCs)	<0.5M – 2M cells per vial 0.5 mL – 1mL aliquots	<ul style="list-style-type: none"> • Single cell suspensions dissociated from fresh solid tumor tissue • Collected via mechanical and enzymatic technique 	<ul style="list-style-type: none"> • % viability • Cells per vial • Freezing media • HLA type
Purified Cell Subsets	1M – 50M cells per vial; custom	<ul style="list-style-type: none"> • Custom cells available from healthy or disease-state subjects • Isolated from whole blood, cord blood, or bone marrow • Purified within hours of collection via positive or negative selection using Miltenyi or Stem Cell Isolation Kits 	<ul style="list-style-type: none"> • Viral status • Phenotyping
Cryopreserved Leukopaks	2000M – 800M cells	<ul style="list-style-type: none"> • Processed with serum-free media (CS10), ensuring the highest yield, viability, and quality of cells post-thaw 	



Deeply-characterized Inventories Across Major Therapeutic Indications

Autoimmune

Common Indications:

- Rheumatoid Arthritis (RA)
- Scleroderma
- Sjogrens Syndrome
- Systemic Lupus Erythematosus (SLE)
- Thrombocytopenia
- Asthma, Allergies, & COPD
- Gastrointestinal Diseases (IBD, IBS, & Celiac)
- Thyroid Diseases
- Dermatology
- Liver Diseases

Infectious Disease

Common Indications:

- Hepatitis A/B/C
- HIV/AIDS
- HPV
- Influenza A & B
- Lyme Disease
- RSV
- Chlamydia
- Gonorrhea
- C. Diff
- Strep A

Oncology

Common Indications:

- Breast
- Lymphoma
- Colorectal - MSS and MSI
- Kidney
- Brain
- Lung (NSCLC)
- Bladder
- Head and Neck SCC

Covid-19

Patient Cohorts:

- Adult
- Pediatric
- Geriatric
- Immunocompromised
- Pregnant
- Comorbidities
- Dialysis
- Risk (Healthcare Workers)

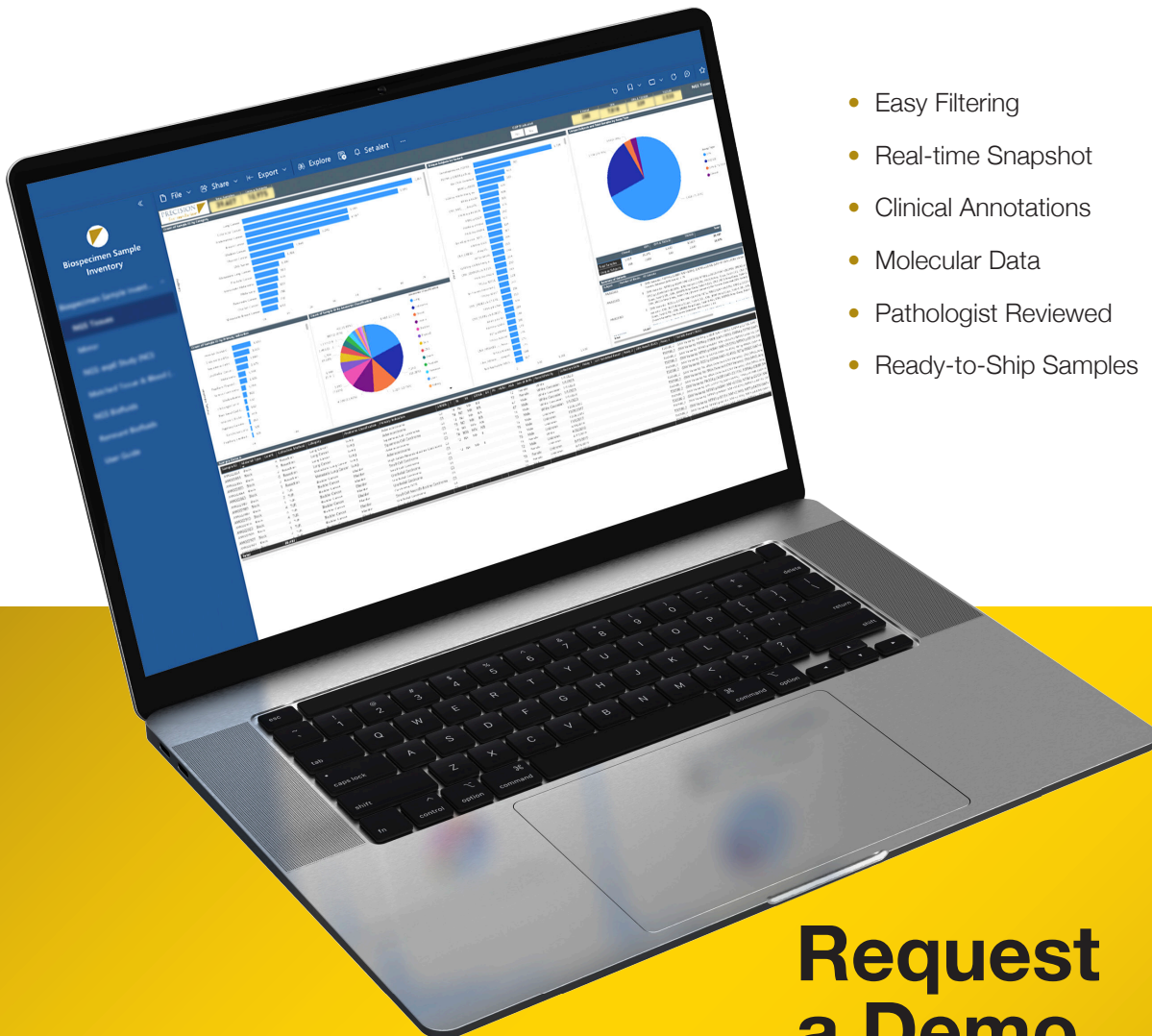
Precision has thousands of IRB-approved, clinically-annotated biospecimens ready to ship to your lab

Precision for Medicine Biospecimens

Biospecimens Inventory Platform

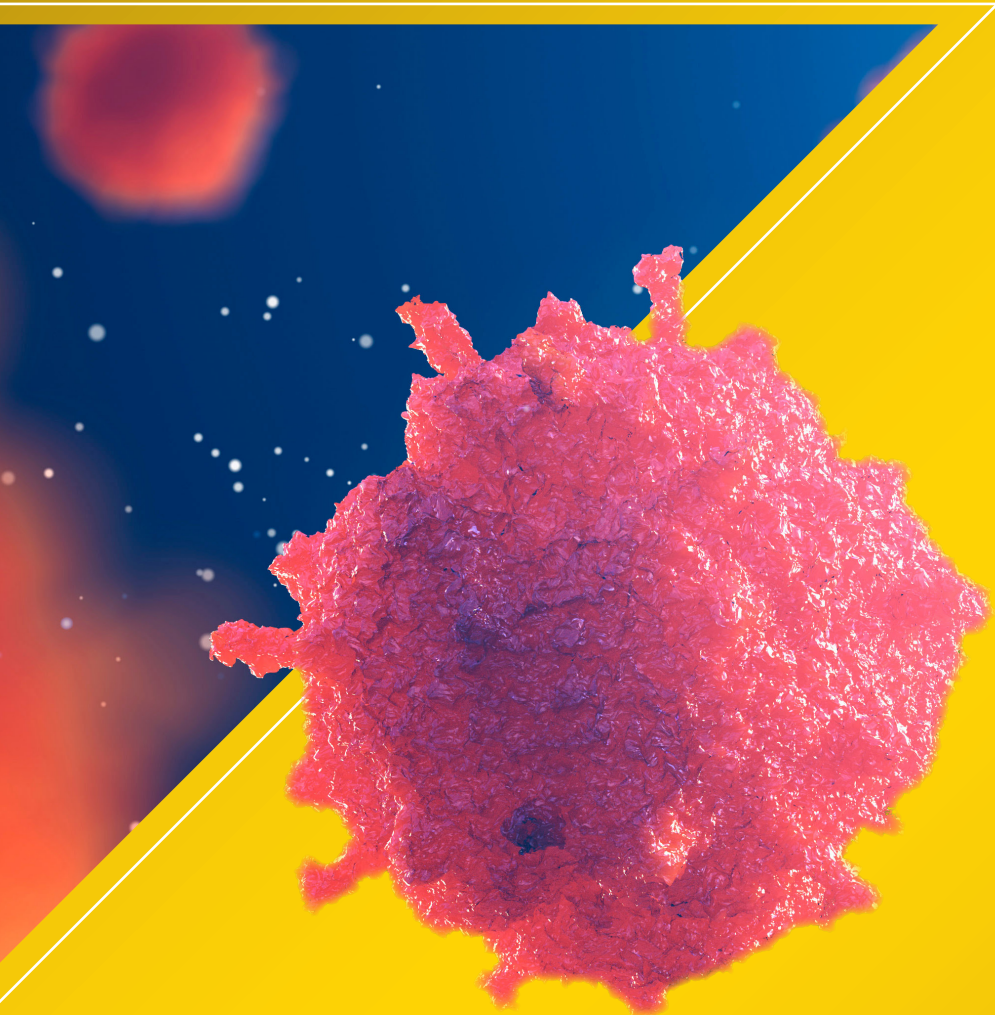
Search. Select. Ship. Start Research Today.

Access Precision's real-time inventory for tissue, biofluids, matched sets, and remnant diagnostic biospecimens. Use our interactive database platform to filter by indication, biomarker status, treatment history, and more. Apply filters to pinpoint desired sample cohorts and check availability in real time.



- Easy Filtering
- Real-time Snapshot
- Clinical Annotations
- Molecular Data
- Pathologist Reviewed
- Ready-to-Ship Samples

**Request
a Demo**



For more information please visit us at:
precisionformedicine.com

© Q2 2026. All rights reserved.
Rev. 01

PRECISION
for medicine®