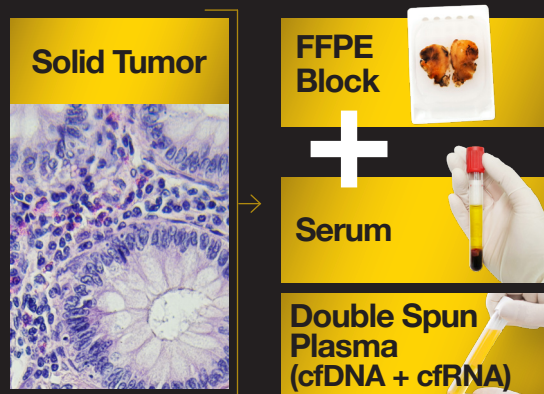


# Biospecimens That Come With Answers

**Pre-characterized matched  
tissue and blood sets with  
integrated multi-omic data.**

**Sequenced. Annotated.  
Ready to analyze.**

- Cancer Biomarker Discovery & Validation
- Liquid Biopsy Diagnostic Development
- Curated for Immuno-Oncology Research
- Data-rich Annotations
- Ethically Sourced, Clinically Relevant



## Matched Tissue & Blood Sourced from indications driving liquid biopsy innovation

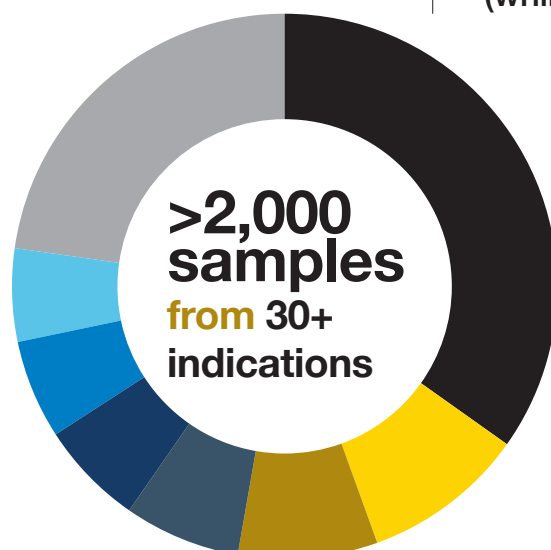
- Frozen and FFPE tissues with matched plasma and serum
- Demographics, medical history, diagnosis, disease characterization, and more included
- IRB-approved and ethically sourced samples, consented and compliant with global regulations

## MIRROR Cohort

The Tumors That Defined  
Precision Oncology,  
**Preserved**

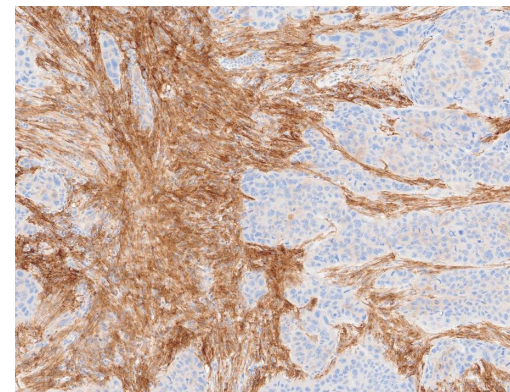
Access tissue and biofluids from the donors  
who built TCGA and The Expression Project  
for Oncology (expO)

**Apply today's tools to yesterday's discoveries  
(while supply lasts!)**



### Cancer Type

- NSCLC: 101 (34.8%)
- Endometrial: 28 (9.7%)
- Breast: 24 (8.3%)
- Pancreatic: 20 (6.9%)
- Prostate: 18 (6.2%)
- Colorectal: 17 (5.9%)
- Thyroid: 16 (5.5%)
- <5% Others



# NGS-Characterized Biospecimens

Skip to discovery with pre-sequenced biospecimens

**37K<sup>+</sup>** Samples

**10K<sup>+</sup>** Participants

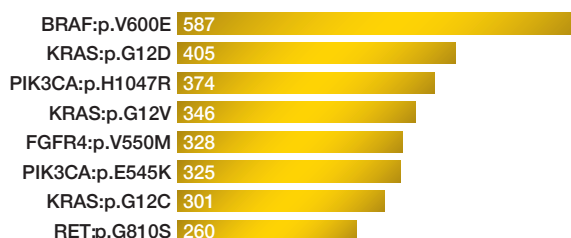
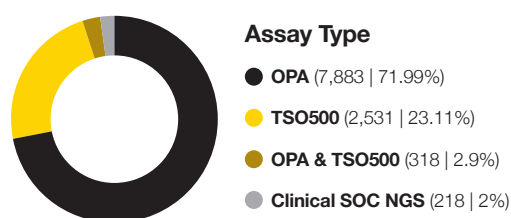
## NGS-Tissue

### Pre-Characterized Using Industry-Trusted Panels

Fuel your research with oncology biospecimens characterized genome-wide via TruSight® Oncology 500 (TSO 500) and Oncomine Precision Assay (OPA).

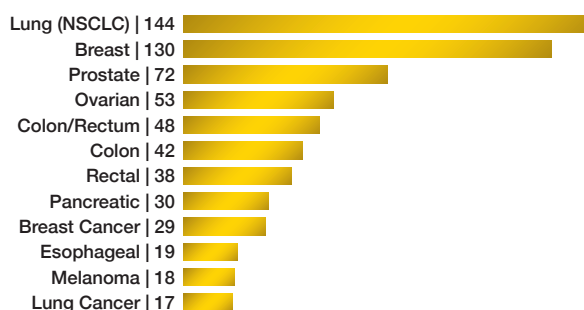
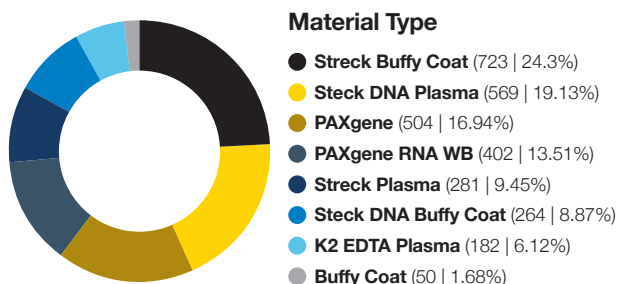
### What's Included:

- **Biospecimen sets** include tumor, normal, and adjacent tissues with H&E images and detailed characterization data
- **DNA Variant Calls** using widely trusted bioinformatic platforms, annotated for frequency, size, type, clinical classification, MSI, and more
- **Additional data** like demographic, surgical, stage, and clinical information included



## NGS-Biofluids

- **NGS Characterization for Oncology:**  
2,000 biofluid samples from 750+ donors sequenced and annotated with volume and LDT results; includes genomic, transcriptomic, and epigenomic data for biomarker discovery
- **Material and Sample Types:**  
Buffy Coat, PAXgene RNA, Streck DNA/plasma, EDTA plasma, serum, urine, saliva, CSF, and synovial fluid—collected via FDA-registered donor center and global network
- **Indications and Disease Categories:**  
Covers 50+ oncology and disease categories
- **Demographics, Stage, and Ethical Sourcing:**  
IRB-approved, ethically sourced specimens with detailed demographics



### Build Your Cohort

Use our interactive platform to filter by indication, biomarker status, treatment history, and more at [precisionformedicine.com](https://precisionformedicine.com)

© 2025. All rights reserved.  
Rev. 01

Download your  
digital copy

PRECISION  
for medicine®